

Six human CK-19 standards allow easy and reliable calibration of the assay; a positive control is also included. Standard solutions are run in each assay; their concentration is plotted against absorbance to produce a standard curve. The CK-19 concentration of unknown samples is calculated from a calibration curve (absorbance versus concentration of standard solutions run in each assay).

The Cytokeratin-19 ELISA is very sensitive (≤ 20 pg/ml) but features a low background. There is no cross-reaction with other serum proteins (cross-reaction tested) or HAMA (human anti-mouse antibodies).

Product	Cat. No.	Pack Size
Cytokeratin-19 ELISA*	1 865 536	96 tests

Also Available	Cat. No.	Pack Size
more ELISAs for medical research:		
Soluble CD4-ELISA	1 460 358	1 kit (96 tests)
h-Interleukin-1 β ELISA	1 600 729	1 kit (96 tests)
h-Interleukin-2 ELISA	1 534 483	1 kit (96 tests)
Soluble h-Interleukin-2-Receptor ELISA	1 295 837	1 kit (96 tests)
h-Interleukin-6 ELISA	1 534 475	1 kit (96 tests)
h-Interleukin-6-Receptor ELISA	1 699 334	1 kit (96 tests)
h-Interleukin-6-Ligand Binding Assay	1 746 391	1 kit (96 tests)
h-Interleukin-10 ELISA	1 699 342	1 kit (96 tests)
TNF- α ELISA	1 425 943	1 kit (96 tests)
hTNFR I (p55)-ELISA	1 759 647	1 kit (96 tests)
hTNFR I (p55) Ligand Binding Assay	1 759 663	1 kit (96 tests)
hTNFR II (p75) ELISA	1 759 655	1 kit (96 tests)
hTNFR II (p75) Ligand Binding Assay	1 759 671	1 kit (96 tests)
Soluble ELAM-1 ELISA	1 699 326	1 kit (96 tests)
Soluble ICAM-1 ELISA	1 573 659	1 kit (96 tests)
Soluble VCAM-1 ELISA	1 742 680	1 kit (96 tests)
Lp(a) ELISA	1 742 671	1 kit (96 tests)
h-sPLA 2 ELISA	1 666 355	1 kit (96 tests)
p53 pan ELISA	1 828 789	1 kit (96 tests)

* For research use only. Not for use in diagnostic procedures.

Anti-HA High Affinity (3F10)

For immunoblotting and immunoprecipitating epitope-tagged proteins

The new Anti-HA High Affinity (clone 3F10) increases the number of monoclonal antibodies for epitope tagging currently offered by Boehringer Mannheim. The antibody is designed to recognize the HA peptide sequence (YPYDVEDYA) derived from the hemagglutinin protein of human influenza virus, even when the HA peptide epitope is introduced into unrelated recombinant proteins by epitope tagging.

Anti-HA High Affinity (3F10) is a rat monoclonal whose high affinity permits the use of lower working concentrations and eliminates the non-specific reactivity sometimes observed with other anti-HA antibodies. Additionally, the rat origin of the monoclonal permits dual localization of a second tag with a mouse monoclonal antibody.

The preparation of epitope tagged proteins and their localization via the Anti-HA antibody has opened up the way to the determination of many parameters:

- size, cellular localization, and abundance of proteins produced by newly discovered genes
- post-translational modifications of proteins
- movement of proteins within cell membranes

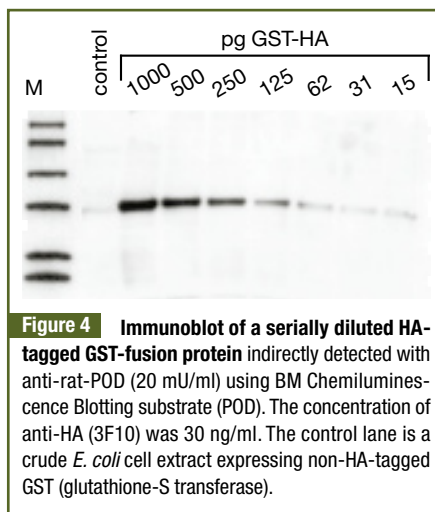


Figure 4 Immunoblot of a serially diluted HA-tagged GST-fusion protein indirectly detected with anti-rat-POD (20 mU/ml) using BM Chemiluminescence Blotting substrate (POD). The concentration of anti-HA (3F10) was 30 ng/ml. The control lane is a crude *E. coli* cell extract expressing non-HA-tagged GST (glutathione-S transferase).

- identity of proteins within functional protein complexes
- function of proteins that are unstable, difficult to purify, or that share epitopes with a number of other proteins.

Anti-HA High Affinity (3F10) is particularly suitable for

- immunoblotting (e.g., dot blots and Western blots; see Figure 4)
- immunoprecipitation
- immunoassays (ELISA)
- immunocytochemistry
- immunofluorescence
- flow cytometry.

Product	Cat. No.	Pack Size
Anti-HA High Affinity (3F10)	1 867 423	50 μ g
	1 867 431	500 μ g

Also Available	Cat. No.	Pack Size
HA Peptide	1 666 975	5 mg
Anti-HA (12CA5)	1 583 816	200 mg
Anti-HA-Biotin (12CA5)	1 666 851	100 μ g (500 μ l)
Anti-HA-Fluorescein (12CA5)	1 666 878	100 μ g (500 μ l)
Anti-HA-Peroxidase (12CA5)	1 667 475	50 μ g
Anti-HA-Rhodamine (12CA5)	1 666 959	100 μ g (500 μ l)
Anti-Rat Ig-POD, Fab fragments	1 348 752	200 U
Anti-Rat Ig-AP, Fab fragments	1 348 744	500 U (1 ml)
Anti-Rat Ig-Biotin, F(ab) ₂ fragments	1 348 779	200 μ g
BM Chemiluminescence Blotting Substrate (POD)	1 500 708	1000 cm ²
	1 500 694	4000 cm ²